



Results – 2014 Minnesota QSO Party

Featured Articles:

- Multi-2 operating from W0NE
Page 3,4
- OM2VL profile
Page 5

MNQP Results:

Summary	2
MN Scores	6
W / VE Scores	8
Club Results	12
Soapbox	14

16th Annual MNQP

Since the beginning of sponsorship of MNQP sixteen years ago, we have seen a consistent and steady rise in participation and scoring. This year we report that we finally had a slight reversal in participation and overall lower scoring in most categories. Some have said that could possibly be due to the ARRL centennial celebration and the focus on the W1AW activity leading up to, and during MNQP. W1AW/Ø was certainly present during the week of MNQP and a major participant in the activities. That being said,

it was still enjoyable for the participants who activated W1AW, at the same time reducing or eliminating their personal efforts.

We had ten different stations activating W1AW/Ø during the contest racking up over 600K points. You will find the details listed as a check log in the results.

Thank you once again to all the long time (and first time) participants who sent in logs, comments, and photos.

I would also like to thank Kelly, WØRK for his effort

in gathering the entirety of the article content and profiles for this year's results.

One change you may have noticed for this year is splitting of the mobile category into a traditional mobile, and a "Rover" category. Please refer to the posted rules if you wish to see how the MNQP committee differentiated these categories.

As always, we look forward to having you participate in next year's event.

73's Mark WAØMHJ



On the left is Dick – NØIM, somewhere in Cook County, obviously searching for the road under all that snow.



On the right is the station of Tim- KE4KE, one of our Minnesota SOPH entrants.

Minnesota (In-State) Results

Last year we had seven mobile operators surpass the 100K mark. This year it was just two stations that were in the race for the top spot. Pat – KØPC and Rich – NØHJZ, each with completely different overall methods battled it out for the top spot. Pat – KØPC comes out on top again this year for a repeat victory. For those of you who may not be aware, Pat runs with a strict CW diet, and Rich provides a reliable 20 meter SSB beacon from Minnesota during MNQP. It was not a surprise when

Jon – WØZQ took the new Rover category with ease. Jon has some nice pictures of his mobile (I mean “rover”) setup on his QRZ.com page. Jon has been roving as far as Kansas, participating in the last few Kansas QSO Party events as well as MNQP.

The Mobile Unlimited category was back again to a single effort with the dynamic duo of AI-KØAD on CW and Dan, NØPI on SSB.

You could say that the Multi-Operator category

was down this year, with only six logs submitted. (Nine were submitted last year.) However I count 27 total operators both last year and this year, so the fun factor did not diminish! I think the Mining ARC – WØMR had set a goal of trying for a strong score in addition to the enjoyment of multi-op’ing, and the results paid off. There have just been a few bigger scores over the last dozen years, and these were organized using some top notch contest stations. Congrats to the Mining group!

In the QRP category, last year’s winner Randy NDØC could not put in a full time effort. He would have had a tough challenge in Jim – NØUR, who is often a rover, but decided to stay home and concentrate on the task of winning the QRP category.

Dan KØTI is a repeat winner this year piloting KØFVF to the top of the SOLP category.

In the Phone only category, Tom – KØYR is also a repeat.

Our top ARES score this year goes to Cory – NØECK.

Congrats to all!

Non-Minnesota Results

Single-OP Low Power

Last year it was a tight race between a pair of New York stations, neither one of them being Tom – N2CU. Tom could not put in a full time effort due to other commitments. This year was a different story as last year’s one-two were absent.

QRP

I hope that Jules – N2WN has a large ham shack with few windows. He will need the wall space, as he easily takes QRP title # 8, and will need to look

for another place to hang an award. Congratulations Jules!

Single-OP Phone

This is not a typo as frequent winner Ron-W1KDA from R.I did not submit a log this year. Rather it was Chris W1KMA also from R.I. who takes top honors. Congrats Chris!

Multi-OP

We have a three-peat win in this category from Mark – KB9S and Paul – WØAIH operating from the WØAIH station in Eau Claire, WI.

Single-OP High Power

Jeff – N8II has a repeat win in this category, probably having a slight geographical advantage over 2nd place entrant W7GKF from Washington who moves up from 4th place last year.

DX-Unlimited

Two years ago, we reported not a single log from our DX friends except for a check log from Antonio – YV5OIE. Last year we had a half dozen logs. This year we doubled the amount of logs

received, and the top scorer from last year (Laci - OM2VL) doubled his score and took the top spot again. This is a very strong showing for working into the central U.S. from that part of the world. Congratulations Laci!

Thanks to all for your participation!

Multi-OP from Winona County - W0NE

**Note* Partial reprint of content from the Winona ARC by permission (Tnx, Matt-KF0Q, Len KC0RSX*

We enjoy participating in the MNQP every year and look forward to the getting together have some fun, and put Winona county on the air. We are not very serious contesters and the event is as much a social event as it is a contest.

There were a couple of things different for 2014. First was the planned W1AW/0 operation on Feb 2nd meant my shack needed to be configured for additional operating positions. This included installing additional antennas and routing new feed lines as well as band pass filters for each transceiver. I spent a great deal of time and energy getting my shack ready for W1AW/0. When

the time came for MNQP, it was pretty easy to use 2 of the stations for our multi-two effort. The 2nd thing different this year was that we had a couple of newly licensed operators: Peter - KD0YOB, and Matt - KD0YSY - who made his debut on HF during the last few hours of the contest.

With the addition of the newly licensed folks we

actually had about twice as many operators as last year. Our QSO rate was not the best, but the objective of our effort was to spur some interest in this type of activity, have fun, and give the new folks a chance to get their feet wet on HF. Using logging software and experiencing a couple of pile ups on the receiving end will hopefully gain interest in our group for more activities like this.

Matt KF0Q



*Tom - KD0YME (left), &
Les - K0BAD (right).*



*Les - K0BAD in the background,
Matt - KF0Q standing (left),
Peter - KD0YOB standing (right) &
Tom - KC9ECI in the foreground.*

Multi-OP from Winona County - W0NE (cont....)

The club decided that we would operate this year at my house using the call W0NE in the multi-two class. My station (KF0Q) is a bit limited antenna-wise and I thought that we could benefit from a few enhancements. For 2014 I wanted to use my 10M two element yagi, add a new 15M delta loop and press my 80M inverted vee into service. I thought we could use my existing 43 foot vertical & 40M dipole in the attic for 20 and 40 meters respectively. I hoped that this configuration would get more stations calling us for a change. I started getting prepared for the event a few weeks ahead of time by arranging the shack and building and installing a new 15M delta loop between two trees in the back yard. Next I updated a couple of anonymously donated computers by installing N1MM software on them along with some other useful tools. I installed serial comm interfaces on all three computers in the shack for three transceivers -two FT897's and my IC746pro (although we could only operate two at a time per contest rules). ICE bandpass filters were installed on every antenna feedline for maximum isolation between all stations. About a week before contest, I configured and tested the network with all three machines (PC's) and three transceivers running. I had a few minor issues

with some network settings which is typical for me (I am more of a hardware guy...). To make sure we would have no trouble, I continued to test the setup several days ahead.

Two days before the contest with a slight break in the weather I raised the 2-element homebrew yagi for 10M to 35ft. The last task of station preparation was to install the 80M vee. With the help of newly licensed radio amateur Matt - KD0YSY we accomplished that task less than 24 hours before the contest. As there was no structure in my yard for the 80M antenna, we bolted a 10 ft. 4"X 4" to my deck to support a 50ft fiberglass push up mast. We worked for just over 2 hrs in temperatures around 3°F, sometimes trudging through the deep snow to find places to support the ends of the antenna, but we got the job done!

In addition to the usual suspects at our station a couple of newly licensed folks stopped by as well as Tom – KC9ECI for operating support. Les – K0BAD always does a great job for us on CW and he likes the early shift. We had a minor problem with the rig settings, but got under way in spite of it with little delay. We started by making contacts on 40M PH and 20M CW. Soon Bob – KC9IWE showed up for some support on the PH position, quickly followed

by Tom – KC9ECI. The three of us traded the phone operating position while Les worked away quietly and steady on CW. Peter - KD0YOB stopped by before noon and helped out for the duration of the effort. Syed- AC0VA & Tom – KD0YME stopped by with food and refreshments while the contacts were entered into our log. Dick – W0RIF stopped by for a visit and Matt – KD0YSY returned for the last few hours and a crash course and "live test" in contesting. Before long Matt was the main operator for our 2nd station in his first debut on the air! With little prompting and a few hesitations Matt stuck in there and made contacts on 80M while I plugged away on 40M. Peter – KD0YOB assisted with the logging. About an hour before the end I explained that we needed to get several thousand

points in order to tie the score from last year. So "game on" from that point as we worked to get as many folks in the log as possible with the remaining time.

In conclusion the plan this year almost worked as we had some mini pile-ups of stations calling throughout the day. We pushed ahead to at least tie the 2013 score. We ended up with almost the same score as last year with 321 contacts and 86 total multipliers for 55,212 points and had some fun along the way. The newest team members were up to the task! Many people contributed to this effort and I really appreciate the support in so many ways. Thanks for all the support with this really fun event. We hope to see you all again February 7, 2015

Les - K0BAD in the background, & Bob - KC9IWE in the foreground.



Profile – Laci OM2VL

MNQP DX participation is resurging in recent years. One of the stations making a regular appearance is OM2VL, Laci, from Dunajska Streda, Slovakia. Dunajska Streda is in the south eastern part of Slovakia near the border with Hungary. Laci takes the top DX spot for the 2nd year in a row.

Laci starting working QSO parties in 2008. He says he has several handicaps working US QSO parties. "Many of the mobile stations begin their routes on 40m", Laci says, "no conditions here on this band at this time of day, so I missed these counties."

"Most of the stations on 40m are over 7.2 MHz, and I can only transmit to 7.2 MHz." He also mentions that there is lots of QRM from EU stations on 20m, making contacts there difficult. 15m is his best band, but he didn't find many stations there.

Laci comments that "Unfortunately 20m closed here too early at 19:19Z. On 40m I made my first QSO at 19:38Z !!! Very hard job making QSO's in this band because of the terrible RTTY QRM from contesting EU stations. Sometimes I was sure deaf, because I can only hear when the RTTY station stops his transmission."

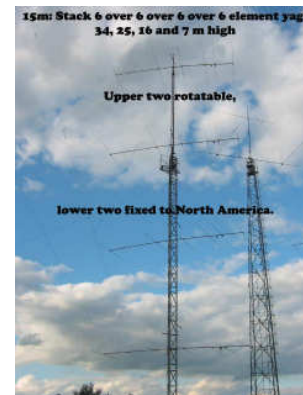
In spite of all this, Laci says "I made 141 QSO's and 71 counties!" He was able to get 42 CW and 3 SSB contacts on 40m, even with QRM from the EU RTTY contest. He adds, "I was very happy, because I made 7 QSO's also on 80m with WBØCFF, W1AW/Ø, NØBUI, NØPI, and 3 times with WØZQ!"

Laci's station consists of a Yaesu FT-1000MP and a pair of OM Power amplifiers. Antennas include 6 over 6 over 6 stack on 10m, 6 over 6 over 6 stack on 15m, 6 over 6 over 6 stack on 20m, 3 over 3 stack on 40m, and a 2 element 80m yagi 50 meters in the air.

Laci has been a ham since 1983 and active as OM2VL since 2003. He says "he likes to compete!" Laci is also the QSL manager for several other OM stations. Laci has a list of US counties on QRZ.com that he hasn't worked yet. If you're on it, he'd like to talk to you!

Shown below left is Laci's 2 element 80 meter yagi, and below right is his 6 over 6 over 6 15M antenna. (Author – I should not be surprised how easy it was to work Laci from the mobile!)

Shown below the antennas is Laci at his operating position.





2014 MINNESOTA QSO PARTY - RESULTS

MINNESOTA STATIONS

Mobile-Single XMTR

<u>Call</u>	<u>Category</u>	<u>State</u>	<u>County</u>	<u>CW</u>	<u>SSB</u>	<u>Mults</u>	<u>Score</u>	<u>Club Affiliation</u>	<u>Operator(s)</u>
K0PC *	MOBILE	MN	19	1022	0	79	161476	Tw in City DX Association	K0PC, W9DND(d)
N0HJZ	MOBILE	MN	25	44	1178	63	156240		
W0AA	MOBILE	MN	18	586	0	62	72664	Tw in City DX Association	WA0MHJ
N0EO	MOBILE	MN	16	405	173	61	70516	NMDXA	AA0AW
K0MPH	MOBILE	MN	8	450	0	66	59400		
KC0DMF	MOBILE	MN	20	0	469	51	47838		
N0IM	MOBILE	MN	4	289	7	64	37888	Northern Minnesota DX Assn.	
KD0CVO	MOBILE	MN	10	0	240	54	25920		KD0CVO, KC0MKS
NR0T	MOBILE	MN	14	118	33	49	14798	Peruvian American R.C.	NR0T, OA4ABC
AE0DB	MOBILE	MN	9	0	17	13	442	SEMARC, Washington County ARES	ARES

Mobile-UNLIMITED

N0PI *	MOBILE-U	MN	21	825	132	81	155034	Midwest Contest Group	N0PI, K0AD, WA0DGW(d)
--------	----------	----	----	-----	-----	----	--------	-----------------------	--------------------------

Rover

W0ZQ *	ROVER	MN	11	805	150	78	148980	Northern Lights Radio Society	
KE0G	ROVER	MN	6	307	0	69	42366		
W9FZ	ROVER	MN	8	0	232	45	20880	Northern Lights Radio Society	W9FZ, KA9VVQ

Multi-OP

W0MR *	MULTI	MN	WSH	173	320	109	107474	Mining ARC	K0RJW, WB0VHF, K9NJ, WA0RKE, KD0WFN, WB0ENX, N0PEY
N0I	MULTI	MN	ITA	31	315	96	66432	NORTHWOODS AMATEUR RADIO GRC	W6GMT, KD0HRO, N0KKT, N7HNM
W0NE	MULTI	MN	WIN	57	265	86	55384	Winona ARC	KC9ECI, KC9IWE, K0BAD, KF0Q, KD0YOB, KD0YSY, W0RIF
W0SV	MULTI	MN	STR	0	173	75	25950	Saint Cloud Amateur Radio Club	N0UV WA0OTO KC0TAB KD0DOS
KC0RIS	MULTI	MN	CRV	0	159	56	17808	Sibley County Emergency Radio Team	KC0RIS, WB0YDF, TRAVIS
W0YC	SOLP	MN	HEN	0	1	1	2	Gopher ARC	N0YNT, K0BEN

Single OP - QRP

N0UR *	QRP	MN	STE	256	115	109	80878		
ND0C	QRP	MN	NOB	0	104	54	11232		
KD0V	QRP	MN	WSC	52	0	31	3224		ARES
WF0T	QRP	MN	HEN	6	0	6	72		

Single OP - Low Power

<u>Call</u>	<u>Category</u>	<u>State</u>	<u>County</u>	<u>CW</u>	<u>SSB</u>	<u>Mults</u>	<u>Score</u>	<u>Club Affiliation</u>	<u>Operator(s)</u>
K0FVF *	SOLP	MN	WSH	293	334	115	144210	F.O.R.C.E	K0TI
N0BUI	SOLP	MN	WIN	258	192	103	92700		
KX0A	SOLP	MN	WSH	173	255	92	78752		K9DU
KC0INP	SOLP	MN	RAM	191	130	99	63558	St. Paul Radio Club	
K0TG	SOLP	MN	RAM	262	55	91	57694	F.O.R.C.E	
KC0RSX	SOLP	MN	WIN	14	322	83	55776	Winona ARC	
W9LHG	SOLP	MN	RAM	279	0	96	53568		
WG0M	SOLP	MN	HEN	203	124	72	47088	Tw in City DX Association	
WB0CFF	SOLP	MN	SCO	311	0	74	46028	SMARTS	
AI0Q	SOLP	MN	CLA	26	216	92	44528		
NX0P	SOPH	MN	FRE	1	266	77	41118		
N0ECK	SOLP	MN	LYO	12	193	85	34850		ARES
N0OK	SOLP	MN	MIL	38	154	87	33408		
NG0E	SOLP	MN	COT	28	169	71	27974		
WB0N	SOLP	MN	HEN	145	27	71	24424	Tw in City DX Association	
N0UY	SOLP	MN	PEN	110	36	77	22484		
K0OB	SOLP	MN	HEN	79	93	62	21328		
N0BK	SOLP	MN	DAK	58	110	60	20160		
K0BBC	SOLP	MN	DAK	0	142	70	19880		
NG0R	SOLP	MN	MEE	9	191	46	18400	Meeker County ARC	
KE4KE	SOPH	MN	SHE	6	137	63	18018		
K0COM	SOLP	MN	HEN	18	120	50	13800		
KC0RET	SOLP	MN	HEN	73	38	56	12432		
WA0KNP	SOLP	MN	LAC	57	52	57	12426	West Central MN ARC	
KA0CSW	SOLP	MN	MEE	102	0	49	9996		
W0JLF	SOLP	MN	ISA	0	100	48	9600	ECMARC	
WA0LJM	SOLP	MN	CLE	0	90	43	7740		
K0JJR	SOLP	MN	STL	0	78	47	7332		
K0JE	SOLP	MN	ANO	44	33	46	7084		
K0QMU	SOLP	MN	HEN	28	31	37	4366		
K0VG	SOLP	MN	HEN	35	29	34	4352	Northern Lights Radio Society	
K0JUH	SOLP	MN	ANO	50	0	30	3000	Tw in City DX Association	
W0BM	SOLP	MN	DOD	10	32	31	2604		
WI0S	SOLP	MN	HEN	29	0	27	1566	SMARTS	
K0LAR	SOLP	MN	CRV	28	0	20	1120	SMARTS	
K0TC	SOLP	MN	RAM	32	0	17	1088		
AC0AF	SOLP	MN	STL	19	0	15	570		

Single OP - PHONE ONLY

<u>Call</u>	<u>Category</u>	<u>State</u>	<u>County</u>	<u>CW</u>	<u>SSB</u>	<u>Mults</u>	<u>Score</u>	<u>Club Affiliation</u>	<u>Operator(s)</u>
K0YR *	SOPH	MN	PIN	0	488	85	82960	MANKATO AREA RADIO CLUB	
N0XT	SOPH	MN	ANO	0	364	93	67704		
NZ9Y	SOPH	MN	DAK	0	293	89	52154	Dakota County Area Radio Club	
AC0ZW	SOPH	MN	HEN	0	262	82	42968		
K0SV	SOPH	MN	KOO	0	185	84	31080	K0ARF	
KD8HAM	SOPH	MN	BEC	0	203	76	30856		

Single OP - PHONE ONLY (cont...)

<u>Call</u>	<u>Category</u>	<u>State</u>	<u>County</u>	<u>CW</u>	<u>SSB</u>	<u>Mults</u>	<u>Score</u>	<u>Club Affiliation</u>	<u>Operator(s)</u>
KD0UWZ	SOPH	MN	CRV	0	288	48	27648		ARES
KD0ASX	SOPH	MN	WRI	0	185	61	22570	Eden Prairie Radio Club	ARES
KC0JFY	SOPH	MN	WEE	0	155	69	21390		
KC0VFP	SOPH	MN	ANO	0	167	60	20040		
KE0RR	SOPH	MN	POL	0	127	62	15748		
K0MJS	SOPH	MN	SHE	0	134	58	15544		
KG0DX	SOPH	MN	STR	0	111	50	11100	Runestone ARC	
WA0EBZ	SOPH	MN	TOD	0	88	43	7568	Runestone ARC	
W0JAR	SOPH	MN	DOU	0	76	42	6384	Runestone ARC	
KB0BK	SOPH	MN	ITA	0	83	37	6142		
KA4GAV	SOPH	MN	RIC	0	73	42	6132		
AJ0CM	SOPH	MN	HEN	0	62	37	4588		
N0MR	SOPH	MN	LAK	0	67	30	4020	Northern Minnesota DX Assn.	
KD0BMV	SOPH	MN	WRI	0	55	32	3520	Meeker County Amateur Radio Club	
WD0K	SOPH	MN	AIT	0	53	32	3392		
WA0VPJ	SOPH	MN	HEN	0	52	31	3224		
WX0Z	SOPH	MN	RAM	0	50	28	2800		
AC0X	SOPH	MN	RAM	0	44	19	1672		
KC0DDV	SOPH	MN	MIL	0	27	23	1242		
KC0NFB	SOPH	MN	STL	0	26	21	1092		
N0ANP	SOPH	MN	HEN	0	30	18	1080		
N0MDC	SOPH	MN	STE	0	23	23	1058	Owatonna Steele County ARC	
N5NYU	SOPH	MN	MRT	0	12	8	192		

WVE STATIONSSingle OP - Low Power

<u>Call</u>	<u>Category</u>	<u>Section</u>	<u>CW</u>	<u>SSB</u>	<u>Mults</u>	<u>Score</u>	<u>Club Affiliation</u>	<u>Operator(s)</u>
N2CU ***	SOLP	NY	226	107	85	56610	North Coast Contesters	
NY4N **	SOLP	TN	154	69	86	38356	Tennessee Contest Group	
KQ3F ***	SOLP	PA	129	32	77	24794	Frankford Radio Club	
WA3HAE **	SOLP	PA	99	62	70	22540	WEEKEND WARRIORS	
VE5KS ***	SOLP	SK	83	48	65	17030	Saskatchewan Contest Club	
W8IQ ***	SOLP	OH	131	0	63	16506		
N6MU **	SOLP	CA	75	40	63	14490	Southern California Contest Club	
KI0I ***	SOLP	MO	93	26	55	13090		
K0HNC **	SOLP	KS	83	12	58	11020		
WA1UJU **	SOLP	MI	51	58	50	10900		
N4ARO	SOLP	TN	41	51	50	9200	TENNESSEE CONTEST GROUP	
KN4Y	SOLP	FL	91	0	47	8554	SPORTSMAN'S PARADISE ARC	
KC0DEB	SOLP	KS	51	34	47	7990	Kansas City Contest Club	
N3KR	SOLP	PA	72	0	47	6768	Frankford Radio Club	
W1END *	SOLP	NH	80	0	41	6560	Yankee Clipper Contest Club	

Single OP - Low Power (cont.)

<u>Call</u>	<u>Category</u>	<u>Section</u>	<u>CW</u>	<u>SSB</u>	<u>Mults</u>	<u>Score</u>	<u>Club Affiliation</u>	<u>Operator(s)</u>
K9BTQ	SOLP	WI	49	22	36	5112	West Allis RAC	
AF6GQ	SOLP	CA	49	9	38	4408		
N2ZN	SOLP	NY	44	11	29	3190	North Coast Contesters	
K0JPL	SOLP	MO	36	8	29	2552	Mississippi Valley DX/Contest Club	
K8FZY	SOLP	OH	44	1	27	2430	Tw in City DX Association	
W8CAG	SOLP	MI	37	0	29	2146		
VE2AWR *	SOLP	QC	30	11	26	2132		
K9DAC	SOLP	OH	40	0	26	2080		
KC0HPM	SOLP	MO	12	25	24	1776		
KD6WKY	SOLP	CA	23	12	22	1540	Northern California Contest Club	
NK0A *	SOLP	ND	1	29	19	1140		
KK9U *	SOLP	IN	13	19	17	1088		
W2CVW *	SOLP	NJ	25	0	20	1000		
N2SO	SOLP	NY	26	0	19	988		
W6BB	SOLP	CA	9	18	17	918	Northern California Contest Club	
NA8V	SOLP	MI	22	0	19	836	East Lansing Dx Club	
W4ZPR	SOLP	VA	23	0	18	828	USS Wisconsin Radio Club	
K4BSK *	SOLP	NC	21	0	17	714		
K1PQS *	SOLP	ME	22	0	15	660		
K4ZGB	SOLP	AL	22	0	13	572	Alabama Contest Group	
K6KQV	SOLP	CA	22	1	12	552	Northern California Contest Club	
KE2D	SOLP	NJ	12	5	12	408		
AI3G *	SOLP	DE	5	10	9	270		
VE7JH	SOLP	BC	2	11	10	260		
NX4N	SOLP	FL	6	0	6	72	Florida Contest Group	
W0CZ	SOLP	ND	6	0	5	60		

Single OP - QRP

<u>Call</u>	<u>Category</u>	<u>Section</u>	<u>CW</u>	<u>SSB</u>	<u>Mults</u>	<u>Score</u>	<u>Club Affiliation</u>	<u>Operator(s)</u>
N2WN ***	QRP	TN	153	93	84	41328	Tennessee Contest Group	
WA8REI	QRP	MI	78	2	53	8480		
N8XX	QRP	MI	47	12	34	4012	Mad River Radio Club	
KB0KFX	QRP	WI	28	32	30	3600		
K8KZB	QRP	MI	45	0	30	3150	Genesee County Radio Club	
WA8ZBT	QRP	TX	39	5	28	2464	DFW Contest Group	
VE7NI *	QRP	BC	26	0	18	936		
KC8UNR	QRP	OH	0	18	17	612	Portage County Amateur Radio Service	
N5HOT	QRP	TN	20	0	14	560		
WB3AAL	QRP	PA	3	14	15	510		
VA3RKM	QRP	ON	15	0	10	300	Contest Club Ontario	
WA4ZOF	QRP	AL	10	0	8	160		
KC5WA	QRP	LA	6	0	6	72	Louisiana Contest Club	

Single OP - Phone

<u>Call</u>	<u>Category</u>	<u>Section</u>	<u>CW</u>	<u>SSB</u>	<u>Mults</u>	<u>Score</u>	<u>Club Affiliation</u>	<u>Operator(s)</u>
W1KMA *	SOPH	RI	0	85	59	10030		
W8KNO	SOPH	OH	0	87	55	9570	Portage County Amateur Radio Service	
WA5ZUP *	SOPH	NM	0	77	51	7854		
WA9OEC	SOPH	WI	0	88	43	7568		
W9TA	SOPH	WI	0	79	39	6162	Sheboygan County ARC	
KJ4LTA *	SOPH	AL	0	62	49	6076	Alabama Contest Group	
AJ4LN *	SOPH	VA	0	64	44	5632	STERLING PARK ARC	
ND3O *	SOPH	ID	0	50	39	3900		
KA9PKK	SOPH	WI	0	49	26	2548	SCVRA	
W0PAN *	SOPH	AZ	0	45	28	2520	Arizona Outlaw s Contest Club	
VE3HED	SOPH	ON	0	38	31	2356		
W7KAM	SOPH	MO	0	38	29	2204	Society of Midwest Contesters	
NE4TN	SOPH	TN	0	44	24	2112		
WB8TQZ	SOPH	MI	0	43	23	1978		
KB1FRW *	SOPH	VT	0	43	21	1806		
W2CJS	SOPH	NY	0	29	28	1624	Bear Bait Radio Club	
K0SIP	SOPH	CO	0	28	25	1400		
NT4Z	SOPH	FL	0	30	20	1200		
K9JIG	SOPH	WI	0	27	22	1188	Northeast Wisconsin DX Assn	
KD7ZLF *	SOPH	OR	0	22	22	968		
AA0LV	SOPH	KS	0	26	18	936	Kansas City DX Club	
WA4JA	SOPH	TN	0	23	18	828	Tennessee Contest Group	
NR8R	SOPH	OH	0	26	15	780		
NW5Q	SOPH	TX	0	20	18	720	DFW Contest Group	
W9JET	SOPH	WI	0	23	15	690		
N9WL	SOPH	NM	0	19	16	608		
N5HMH *	SOPH	LA	0	18	16	576		
N7MZW *	SOPH	WY	0	16	15	480	Grand Mesa Contesters of Colorado	
N8DKA	SOPH	MI	0	16	13	416		
KF0JA *	SOPH	GA	0	13	13	338		
WB7CYO	SOPH	ID	0	14	12	336		
VE2HKW	SOPH	QC	0	15	11	330		
K4TRH	SOPH	TN	0	13	12	312		
N9EMA	SOPH	IN	0	12	11	264		
W8IDW	SOPH	WV	0	11	9	198		
KG9JP	SOPH	AZ	0	12	8	192	Arizona Outlaw s Contest Club	
N5WVR	SOPH	VT	0	10	9	180	CVARC	
VE9ML *	SOPH	MB	0	11	8	176	Maritime Contest Club	
KK4MOV	SOPH	NC	0	10	8	160		
AB4GG	SOPH	TN	0	8	7	112	Tennessee Contest Group	
N1WRK	SOPH	MA	0	7	7	98		
N8FYL	SOPH	MI	0	7	6	84	L'anse Creuse ARC	
N9KY *	SOPH	KY	0	6	6	72		
VA7ODX	SOPH	BC	0	6	5	60	Orca DX and Contest Club	VA7BEC
KV4MO	SOPH	TN	0	5	5	50		
KD7HGS	SOPH	ID	0	5	5	50		

Single OP - Phone(cont...)

<u>Call</u>	<u>Category</u>	<u>Section</u>	<u>CW</u>	<u>SSB</u>	<u>Mults</u>	<u>Score</u>	<u>Club Affiliation</u>	<u>Operator(s)</u>
K8BHK	SOPH	MI	0	6	4	48		
KC4EZN	SOPH	NC	0	4	4	32		
AE7DW	SOPH	AZ	0	4	4	32	Arizona Outlaw s Contest Club	
W4ANT *	SOPH	SC	0	4	3	24	SECC	
KF5TXU	SOPH	TX	0	3	3	18	LARC	
N8DRG	SOPH	OH	0	2	2	8		
AE7LD	SOPH	OR	0	2	2	8		
VE2PIJ	SOPH	QC	0	1	1	2	Contest Group Du Quebec	
N7TEW	SOPH	AZ	0	1	1	2	Arizona Outlaw s Contest Club	

Multi - OP

<u>Call</u>	<u>Category</u>	<u>Section</u>	<u>CW</u>	<u>SSB</u>	<u>Mults</u>	<u>Score</u>	<u>Club Affiliation</u>	<u>Operator(s)</u>
KB9S ***	MULTI	WI	167	98	78	41340	Eau Claire ARC	KB9S, W0AIH
K5KDX *	MULTI	AR	0	69	44	6072		K5KDX, K5KDL
W1SJ	MULTI	VT	0	15	13	390	Radio Amateurs of Northern Vermont	W1SJ, AA1SU, KB1IVE, KB1THX

Single OP - High Power

<u>Call</u>	<u>Category</u>	<u>Section</u>	<u>CW</u>	<u>SSB</u>	<u>Mults</u>	<u>Score</u>	<u>Club Affiliation</u>	<u>Operator(s)</u>
N8II ***	SOHP	WV	151	115	82	43624	POTOMAC VALLEY RADIO CLUB	
W7GKF ***	SOHP	WA	135	88	84	37464	Radio Club of Redmond	
W0BV ***	SOHP	CO	122	50	72	24768		
W0BH ***	SOHP	KS	107	60	72	24048		
WA6KHK ***	SOHP	CA	78	39	70	16380		
WB0TEV ***	SOHP	TX	0	118	60	14160	Lone Star DX Association	
NW8U **	SOHP	WV	44	68	60	13440		
K4FCG ***	SOHP	FL	0	101	60	12120	Florida Contest Group	K1KNQ
N1NN *	SOHP	MA	77	0	46	7084		
W5ASP	SOHP	TX	70	0	46	6440		
VE3CX *	SOHP	ON	46	1	36	3384	Contest Club Ontario	
K0DEQ	SOHP	MO	37	3	30	2400	MISSISSIPPI VALLEY DX/CONTEST CLUB	
K6DGW	SOHP	CA	41	0	27	2214	Northern California Contest Club	
AA0A	SOHP	MO	0	38	25	1900		
N4VV	SOHP	TN	36	0	22	1584	Tennessee Contest Group	
N7EPD	SOHP	WA	25	6	22	1364	Pacific Northw est VHF Society	
K1JY	SOHP	NH	0	29	23	1334		
WB8WKQ	SOHP	MI	12	11	21	966		
AB1QP *	SOHP	CT	12	11	19	874		
WI9WI	SOHP	WI	23	2	17	850	Society of Midw est Contesters	
VA6NJK *	SOHP	AB	0	20	19	760		
W2RR	SOHP	NY	18	0	14	504	Western New York Contest Club	WA2AOG
W9OA *	SOHP	IL	15	0	12	360	METRO DX CLUB	
VE5ZC	SOHP	SK	0	14	12	336		
N6ENO	SOHP	CA	0	8	7	112	NORTHERN CALIFORNIA CONTEST CLUB	
W0NFS	SOHP	MO	0	7	7	98	Mississippi Valley DX/Contest Club	
NS9I	SOHP	FL	8	0	6	96		

DX STATIONS

Unlimited

<u>Call</u>	<u>Category</u>	<u>Section</u>	<u>CW</u>	<u>SSB</u>	<u>Mults</u>	<u>Score</u>	<u>Club Affiliation</u>	<u>Operator(s)</u>
OM2VL *	DX	DX	107	34	71	20022		
DL3GA	DX	DX	68	14	52	8528		
DL4CW	DX	DX	47	0	29	2726		
DK2CF	DX	DX	28	5	20	1320	DARC	
YV5OIE	DX	DX	9	16	22	1100	Radio Club Venezolano	
DL5ME	DX	DX	21	2	17	782		
OK2EC	DX	DX	17	0	13	442	Czech Contest Club	
UA3AGW	DX	DX	16	0	12	384	Russian Contest Club	
SP5SA	DX	DX	13	0	13	338		
EA3ELZ	DX	DX	0	8	8	128		
SP6JOE	DX	DX	2	0	2	8		
HB9FBP	DX	DX	2	1	1	6		

Checklog

W1AW/Ø	Checklog	MN	956	1539	125	623750
KØTT	Checklog	MN				0

*** Indicates Plaque / Certificate & MNQP Prize

** Indicates Prize from MNQP

* Indicates Plaque or Certificate

CLUB COMPETITION

<u>Club Name</u>	<u>#entries</u>	<u>Score</u>
Twin City DX Association	6	311082
F.O.R.C.E	2	201904
Northern Lights Radio Society	3	174212
Midwest Contest Group	1	155034
Winona ARC	2	111160
Mining ARC	1	107474
Tennessee Contest Group	5	89824
MANKATO AREA RADIO CLUB	1	82960
NMDXA	1	70516
NORTHWOODS AMATEUR RADIO GROUP	1	66432
St. Paul Radio Club	1	63558
North Coast Contesters	2	59800
Dakota County Area Radio Club	1	52154
SMARTS	3	48714
POTOMAC VALLEY RADIO CLUB	1	43624
Northern Minnesota DX Assn.	2	41908
Eau Claire ARC	1	41340

CLUB COMPETITION (cont.)

Radio Club of Redmond	1	37464
Frankford Radio Club	2	31562
KOARF	1	31080
Saint Cloud Amateur Radio Club	1	25950
Runestone ARC	3	25052
Eden Prairie Radio Club	1	22570
WEEKEND WARRIORS	1	22540
Meeker County ARC	1	18400
Sibley County Emergency Radio Team	1	17808
Saskatchewan Contest Club	1	17030
Peruvian American R.C.	1	14798
Southern California Contest Club	1	14490
Lone Star DX Association	1	14160
West Central MN ARC	1	12426
Florida Contest Group	2	12192
Portage County Amateur Radio Service	2	10182
ECMARC	1	9600
SPORTSMAN'S PARADISE ARC	1	8554
Kansas City Contest Club	1	7990
Alabama Contest Group	2	6648
Yankee Clipper Contest Club	1	6560
Sheboygan County ARC	1	6162
STERLING PARK ARC	1	5632
Northern California Contest Club	5	5336
West Allis RAC	1	5112
Mississippi Valley DX/Contest Club	3	5050
Mad River Radio Club	1	4012
Contest Club Ontario	2	3684
Meeker County Amateur Radio Club	1	3520
DFW Contest Group	2	3184
Genesee County Radio Club	1	3150
Society of Midwest Contesters	2	3054
Arizona Outlaws Contest Club	4	2746
SCVRA	1	2548
Bear Bait Radio Club	1	1624
Tennessee Contest Group	1	1584
Pacific Northwest VHF Society	1	1364
DARC	1	1320
Northeast Wisconsin DX Assn	1	1188
Radio Club Venezolano	1	1100
Owatonna Steele County Amateur Radio Club	1	1058
Kansas City DX Club	1	936
East Lansing Dx Club	1	836
USS Wisconsin Radio Club	1	828
Western New York Contest Club	1	504
Grand Mesa Contesters of Colorado	1	480
Czech Contest Club	1	442
SEMARC, Washington County ARES	1	442
Radio Amateurs of Northern Vermont	1	390
Russian Contest Club	1	384
METRO DX CLUB	1	360
CVARC	1	180
Maritime Contest Club	1	176
L'anse Creuse ARC	1	84
Louisiana Contest Club	1	72
Orca DX and Contest Club	1	60
SECC	1	24
LARC	1	18
Contest Group Du Quebec	1	2
Gopher ARC	1	2

Soapbox

Hi all, I had a lot of fun. Thanks for all the counties that K0PC gave me and the other calls that give me a lot more counties they were operating from. -**K8FZY**

There were a few more stations than in the past few years. During the last two hours of the contest most of the MN stations were on 40m working themselves for points. 40m not open on the west coast that early in the afternoon. Uffda! – **KD6WKY**

I would rather have been in MN, but had some time off writing the dissertation to get the UC Berkeley club station on the air. -**W6BB**

Thanks Neo (N0EO/m) for my last MN county (Marshall)! -**WA6KHK**

It's snowing here all day, so a good way to spend a winter day. FT-2000, 5W QRP, Mosley pro 67-B yagi at 48 feet, 2 el.40. Good job, everyone. Special TNX to the "red river rockin' rovers,"; red rover, red rover, let a new county come over. Bam! Ca-ching! Gotcha! Tnx for a fun pre-super bowl "party," hi!-**WA8REI**

First time entrant. The party was great fun with plenty of activity! I was using 100 watts and a wire beam. Was able to work almost all of the stations I heard until conditions went down. I wonder if there will be a low power category for DX stations, can't really compete with big gun contest stations...-**DL4CW**

I had problem with county abbreviations. I would be nice if there was a listing of the official abbreviations as part of the rules or easily accessed as part of the web site. Gen Log was giving me WAS for Waseca County an other station told me that was the abbreviation for Washington County. I change two WSC for Waseca County. I worked two stations that were using WSH, I assume they were in Washington County. It would be nice to have an official list of county abbreviations. Used a Norcal 40a at 2 watts on cw. I hope I can participate again next year. Thanks, great event. 73, Merlin - **KD0V**

Fun way to speed up a cold Saturday. -**WA4JA**

Put in a little over 3 hours on this effort as a guest at the W0ZF station. -**K0BBC**

As usual, great contest, great mobile effort (128 QSOs with 11 mobiles). ***Only "downer" was the non-county identification of the W1AW/0 stations!!! Poor decision on ARRL's part to not allow these stations to sign "W1AW/cty." Would not have been such a problem if there were only one W1AW station in the state during MNQP. Took a lot of extra time trying to decipher which county each CQ was coming from. Alternately, the stations should have signed: "W1AW/0/cty." But I did not hear anyone doing this. Bill, -**W7GKF**

As sponsor station of BCQP, I spent my time CQing. But I always offered to trade a Q with MN stations. Not everyone took me up on my offer, though. Hence, a rather small log this time. 73-Rebecca - **VA7BEC**

Nice Contest! Thanks to those who put this contest on and those who worked. -**NT4Z**

Thanks to everyone especially the mobiles!-**W8KNO**

I worked CW mostly on 40m and a few on 80m. I made a few phone contacts also. Had extremely high noise level from a local noise source that made copy early in the event rather difficult. I must of had a decent signal on 40m since the rovers had no problem copying me. I like the 2 element yagi at 88 feet fed with 7/8 hardline and running barefoot. It was great to hear Wally W0PHD on from Marshall county handing out contacts. -**N0UY**

Thanks for the contacts. Used the kenwood 830 all day, it kept the shack warm!-73 **KC0VFP**

Another wonderful MN QSO party. Would like to see more rovers on SSB 80 or 40 meter band so MN stations have a chance at all MN counties. Thank you -Wayne **WA0EBZ**

Soapbox (cont...)

Thanks to the ARES stations for their effort. Thanks to all the mobiles. Missed N0IJ, and hope he had fun. My score was down from last year, 20 or so QSOS, mostly on 40M. The band seemed either long or short too often. 20 was decent the entire period here. Although QSO count was down, multipliers were up by 1 to 84 counties. The sweep eluded me again as I missed BIG, CRL & LES. Not difficult ones either Hi Hi. It was an unusual tie this year for the most mobile QSO between CW & SSB. K0PC AND N0HJZ both provided 27 contacts, Rich provided more multipliers and was doing well to hold a run freq on 20 as long as he did. W0ZQ came in 2ND with 22 followed by N0PI (20), N0EO (16), KC0DMF (15), W0AA (11), K0MPH (7), KE0G (6), W9FZ (3) and AE0DB (1). There may have been others. It looks like I swept both N0HJZ and KE0G. Good to work known QRP'ers ND0C and KE0G. Running was not very productive this year. I think the bands were a bit busy with several contests and major DXpeditions. Everyone seemed like they were having fun and that was the most important task. Hope all the Minnesota mobileers had safe drives and no major issues. I still see a sweep in the future-**N2WN**

Just got back on the air with an Icom 706 and a Cushcraft a5 on the roof.-**N5NYU**

Were this the Ohio QSO Party, no mobiles would have been on the road. The MN mobiles were great!-**W8IQ**

Tnx to MWA for a fantastic event!-**KG0DX**

GOOD CONTEST!-W9TA

Enjoyed the event and look forward to the next one. MN has an awful lot of great operators and dedicated to the event, especially your rovers.-**K9DAC**

Chasing the mobiles made the contest interesting. Good turnout overall. -**N4ARO**

A great showing of CW mobiles, worked eight of them. A fun party.-**KN4Y**

Tough band conditions this year, Had Fun-**N6ENO**

Thanks for all the fun this weekend. The mobiles' really did a great job!!!! Thanks for the Q's, Ed-**KJ4LTA**

40 meters was great, wide open-**K0MJS**

K3/10 at 5 watts to three different variations of portable antennas. Started the day at zero degrees F, and since I respect the power of carbon monoxide, I don't run the engine of the SUV while operating. Temp dropped to 36 F at the operating position, and I found out the used Vibroplex I bought recently binds up at these temperatures, so stopped and re-adjusted the bearings, springs, and contacts several times. Sorry about all those extra dits and dahs! By late morning, the sun was high enough, and the clouds cleared out enough it was 16 degrees F outside, but a toasty 60 F inside the SUV. Enjoyed giving out the last county in MN for N2JNE... glad I could help! Thanks for your great copy of my QRP out there.73,Dan-**KE0G**

403 miles, 25 counties, some snow, lots of wind, lots of great QSO's, LOTS of fun! Thanks to everyone that followed me around. I've got an idea for nextyear to improve my score!!- **N0HJZ**

I had a rough start with this one. The PC was a bit sluggish so my keying was a bit erratic the first couple of hours. I may have to rebuild the PC. Hmm... Looking at last years results it seems I have exactly the same number of SSB QSO's as I did last year. I thought there was more SSB activity though this year. At least it seemed that way. This is where SO2R would pay off. SSB seems a bit more casual operation with groups on having fun (that is what it is about, right?), but that is a killer for rate. Fewer mults and fewer CW QSO's lead to a lower score this year. It was good to see 15 meters with some life. I heard W1AW/0 on 10, but could not raise Bill's attention. Good to hear all the W1AW/0 activity too! Lots of fun as usual. Looking forward to next year!-**K0TG**

My first MNQP! I had limited time to operate. Lots of activity with this QSO Party. Thanks to the mobiles running all those counties. Dave-**WN4AFP**

Soapbox (cont...)

*It was triumph of the human spirit to drive around handing out counties with snow wind and sub 10 degree temps! Many thanks to all of the mobiles for activating all or almost all of the counties! I could tell fairly early on that it was going to be a little tougher this year for me and I was not planning to glue myself to the chair. Congrats to Tom, N2CU for a great effort. The good: Mobile activity on 20 meter phone was up with N0EO himself operating 20 phone while Al was on 40 CW. Also on 20 SSB, Craig KC0DMF/M apparently a newbie did a good job of running stations from quite a few counties. W9FZ/M also ran several counties on 20 and W0ZQ showed up when CW slowed down. Thanks to Rich, N0HJZ for the most mobile Q's and counties, working just 20 phone until he returned home. 15 was open but not well to SE MN from here and very underutilized. Conditions on 20 were good up until sometime in the last hour. 80 was wide open to MN the last hour and provided my best QSO rate of the party when I found a group of MN phone ops at about 2355Z! The bad and the ugly: Lots of 20 M users on both modes made for reduced CW mobile activity and some tough times on phone. It is very rude and selfish for a DXpedition to listen from 2 to 22 KHz above their CW frequency! There was more of the same on phone from two groups. Having three other QP's (the BC guys were loud on 20) along with the inevitable RTTY test on 40 CW didn't help either. MN was weak on 40 all day until about 21Z and I could tell some of the mobiles were sticking to 40 almost all of the time. This is not that bad of a strategy since that is where the mobiles can work MN counties for a boatload of mults. I will have to say that almost every in the noise mobile I heard was able to hear me, good ears! I should have struggled a bit more down there. I found almost no 40 phone activity. I hit the wall about 21Z until 23Z really struggling to stay on the radio (took off for 15 minute break and then 20 minute meal) after a poor night's sleep the night before; the rest of the time I felt OK. Power ran was only 200 W, the amp is down. Minnesotan hams are a very polite nice bunch of people and are obviously very dedicated to making the MNQP successful. I guess you have to be in order to survive the winter. Thanks to all who have endured so much and still got on the air and thanks, of course, for the QSO's from all over MN. 73, Jeff- **N8II***

The Polar Vortex took a short break from hanging out over MN on Feb 1. The car thermometer showed 5 (above!) leaving the house at 1230Z and it actually rose to 24 degrees (above!) at one point. I had a little light snow around 1500Z but it did not amount to more than a dusting and all the roads that I drove on were in good shape. Just before the contest started at 1400Z I had a successful schedule with SM7ZDI from KNB to give him one of four remaining MN counties he needed; that was fun. After that I got out of the car to change bands and hence my antenna and I found out my antenna's quick disconnect was frozen solid. It seems that when I mounted the antenna onto the quick disconnect that I had laid the bayonet part of the quick disconnect on the ground where it ingested some snow. Having been inside the car the antenna had been warm and unknowing to me melted some of this snow and when I mounted the antenna it refroze to the antenna mount. My quick disconnect was no longer a) quick or b) a disconnect. So, a few minutes before 1400Z and the start of the contest found me disassembling my antenna mount and placing it in the car under the car heater to thaw. Note to self: throw in a small torch in my MNQP Go Bag. After a few minutes I was able to take the antenna mount apart, dry it, reassembly it, and we were off and running again. For the rest of the contest I was careful to make sure that I never put the bayonet part of the Hamsticks on the ground in order to keep them snow free. I started the contest at the KNB/PIN/CHS/ISA boundary with hopes of makes some Q's from all four counties on 80m before 1430Z. As you can see in my summary above it was not a good strategy netting me only 22 80m Q's combined. In past MNQP's I have been able to work into OH and out west into WA, etc, during this time period on 80m but not this year. Only N2CU was "DX" and Tom was my last 80m Q before going to 40m. I may need to change my strategy for next year in regards to starting out on 80m. 20m phone was a nice surprise. I think the N0HJZ/m SSB run along with the addition of the Phone Only mode has made this more and more popular. I had a "long" drive down 35w through CHS where I ran on 20m phone, and then again moving from HEN/RAM down 35w to the DAK/SCO/RIC line. When I was driving my plan was to nest up next to Rich who was hanging out on 14.255. I could hear guys working Rich on that freq but just above him and just below him it was a mess, so I ended up higher up the band around 14.270 or so. 20m phone in the mid to later afternoon hours always seems pretty good and I had a small pile up from SCO county netting me 48 Q's in 20 minutes ... not bad for 100 watts into a 8' Hamstick. Over the full contest I had 48 DX contacts as follows: DK2CF(2), DK3BN(1), DL3GA(6), DL4CW(3), DL4FN(2), DL5ME(5), DL8MLD(1), HA8IB(5), OK2EC(6), OM2VL(10, 3 of these on 80m), SP5SA(5), UA3AGW(1)and YV5OIE(3). I did try 15m mid day from WSH county netting me two lonely contacts ... I called CQ MNP on 21.050 for ten minutes. The band did not sound very active and I did not go back any more after that. Thanks everyone for all the Q's. Weather permitting, see you from the WIQP next month. 73, Jon-W0ZQ/m

*Best I have done in the 8 years I have participated mainly thanks to the mobile stations doing different counties. It was nice to have short skip on 20 meters as well as my usual 40 meters. 100W into a G5RV with a layer of ice on it. Band conditions were not that great as I had a lot of background noise this year.- **W7KAM***

Soapbox (cont...)

Well another MNQP in the books. Not quite the same score as last year. The number of QSO's landed right at the same point as last year, seems that 630 something is my magic number, but the multipliers were down. For most of the contest I was well ahead of last year's rates, at the end of the 6th hour I was 61 Q's ahead (almost an hour's worth). But things slowed down (and I ran out of gas somewhat) near the end and the last 4 hours were only 53/hr hours. The big difference was the multipliers. Same number of states (47) but only 4 RAC Sections as opposed to 7 last year, and the big hit, only 64 counties as opposed to 72 last year. I worked way more DX this year, 23 against 2 in 2013. I worked Laci OM2VL on 15,20 and 40 CW. On 40 at 2213z he was stronger than most of the other callers at the time. I remember sending him 'Big Sig'. The other change this year was the CW/Phone ratio. Last year it was 400/200, this year it's very close to 50/50 with PH edging out CW by a small margin. It's been many years since I have made more Phone contacts in this contest. Not sure what was going on, but I just never got any really big CW runs going, and it seemed always better on Phone. Maybe all the W1AW activity skewed the activity some, plus missing a bunch of mobiles on 40 CW cut into that number. I went to 160 at 2330 but only made one contact. I guess everybody was in the FT5 pileup down the band. I could not believe I was able here them on 160, but that's another story. Best hour was 93 in the 6th hour, which bests any hours last year. One thing that is nice is the number of MN fixed stations that are active all day has sure increased over the last few years. I'm talking about the casual contest guys, not the MWA folks. Years ago, it wasn't until late in the contest that the guys would start showing up 75M to hand out a few contacts, now there's a pretty good representation all day on 40 (and I assume 20). I am sure the phone only category has helped out in that regard. Thanks everyone for a fun 10 hours. It's always an honor to be able to put K0FVF on the air. Dan K0TI @ K0FVF

Unfortunately 20m closed here too early at 19:19Z. On 40m I made my first QSO at 19:38Z !!! Very hard job made QSO's in this band because of the terrible RTTY QRM from contesting EU stations. Most QSO's with mobiles: N0PI 19/17, N0HJZ 17/17, K0PC 13/13, W0ZQ 11/9, W0AA 8/8, N0EO 7/6, K0MPH 4/4,, KC0DMF 4/4, N0IM 3/3, NR0T 2/2 -73 Laci **OM2VL**

A successful QSO party sports many mobiles, I worked eight of them on CW and had a ball, RF method. It was a cold operation, but what can one expect when letting a signal from Minnesota into the radio shack. -**KN4Y**

Glad short skip was great on 40 meters (and even on 80 toward the end of the contest. Fair representation of stations, though some apparently stayed on 20M most (all?) of the time. Tried 20 in early afternoon, but only heard one VE7 in the BCQSO party, so worked him, forced N1MM to accept the non standard info for later retrieval. Thanks to all the fixed, mobile, and even W1AW/0 stations who pulled me through! -**N8XX**

With a new grandson on the way (in AZ) hopefully sometime on February 1, a full-time effort wasn't in the cards, but chasing mobiles around a brisk Minnesota was just the ticket in between updates from the hospital! I was up there last year with Ron/AD0DX, and we learned first hand what MN/m means, so it was a pleasure to work and chat with these intrepid characters: K0PC/m(16), N0PI/m (14), W0ZQ/m (13), N0EO/m (12) Loudest CW/m signal into KS this year!, KC0DMF/m (10) What a consistently booming SSB/m signal!, K0MPH/m (10), W0AA/m (9), W0IM/m (5), KE0G/m (4), NR0T/m (1) Missing from the list is N0HJZ/m who I checked for constantly but at best heard faintly on 20m although I heard others working him. Did I just miss you (and many of those counties) on 40m? The fixed stations were out there, too, with K0FVF seemingly everywhere. It was fun to work W1AW/0 three times from MN on CW. Thanks to the MWA gang for putting another good one in the books. I'll get back up there in the mobile one of these years. Thanks to all for the Qs! 73, Bob-**W0BH**

Activity seemed down a bit this year, at least for me. Conditions were quite good. Was nice to hear so many mobiles. Thanks again for a great party. Eldon - **W1END**

Always enjoy working old friends from my Minnesota days in Bloomington. Surprise was working W0ZQ who reminded me I gave him his CW test 40 years ago (time flies when you are having fun!). Great to work Rich N0HJZ/m in 14 different counties on 20. Not much luck on 15 and 10 was a washout. CU again next year. Larry-**W0PAN**

KX3, 5w, verticals. Thanks for the contacts. -**VA3RKM**

Elecraft K3 at 5 watts, 34' vertical dipole. -**KE0G**

Soapbox (cont...)

My best score ever in this contest, and a new LP record, even though I fell two counties short of the sweep. Lots of fun but those W1AW/0 stations were confusing. Some were rovers (or mobile), some were not. Never sure what the county was until someone else worked them as I waited to hear the county. I missed some regulars, made some new friends. Thanks, MWA for another great contest. - N2CU

Didn't have much time to play this year due to other family stuff and getting ready to fly out on a business trip in the morning. Operated just under 3 hrs, SSB only, and of course QRP, to hand out the Nobles multiplier. Didn't seem to be much going on 10 or 15, 20 was flaky, 40 was OK and 80 was pretty good when I dropped down there in the last 1/2 or so. -ND0C

Would rather have been in MN, but had some time off writing the dissertation to get the UC Berkeley club station on the air. - W6BB

I had a blast operating from Koochiching county. Highlight of the day was while I was adjusting the windom antenna, the bartender at the bar across the street from my daughter's apt. came out and asked me what I was doing? It seems that the bar patrons were watching me and were totally befuddled by what I was doing. I took a break and went over to explain. One of them even bought me a cold one. That's a first for me. It was a great time. Thanks to all for all of the contacts. -K0SV

2014 is year eleven of the K0PC/W9DND team in the MN QSO Party. Weather is always a concern in early February in these parts but we had a good day Saturday. Highs about 15F and just a little snow in the morning. We changed our route up a bit this year to improve the county coverage. This meant we operated in just 19 counties instead of the 22 we hit last year. But the route was reasonable and we stayed pretty close to schedule. Top ten minute rate: 186/hr Top sixty minute rate: 140/hr. Special credit goes to N2CU and N2WN for a Clean Sweep of the nineteen counties we activated. Thanks to everybody who participated in MNQP 2014. We are looking forward to Feb 7th, 2015. 73, Pat K0PC & John W9DND

I knew the MN QSO party was just a few days away, and was my idea to participate, as I participated in the Florida QSO Party. I spend half day to setup station, and the software for MN QSO party downloaded from MN website. In the morning here in Switzerland many US stations are operating and received with 59+. I thought about next hours this good propagation still open. All was ready to start... but, when QSO party was ready to go in my station I can hear only few US hams. Reading on DX spots for MN ham but impossible for me to hear... Oh my God, wrath up?! All afternoon waiting but unfortunately no more QSO's are logged. I will try for SURE next year. Thanks and hope better next year. 73 de Francesco HB9FBP

MNQP Sponsors[Twin City DX Association](#)[TWIN CITY FM CLUB](#)

Northern MN DX Association

[St. Paul Radio Club](#)[Runestone ARC](#)

(in memory of Jay Wood AA0EV)

[Paul Bunyan ARC](#)Mike Mullen, [N0BUI](#)Bill Lippert, [AC0W](#)Mike Gulbranson, [WG0M](#)Pat Cain, [K0PC](#)

Individual Sponsors:

Al Dewey, [K0AD](#)Jon Platt, [W0ZQ](#)

E-MAIL:

MNQP@w0aa.org

We're on the Web!

See us at:

www.w0aa.org**Mark your calendars for MNQP 2015**

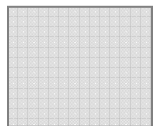
The 17th Minnesota QSO Party will be held on **Saturday, February 7th, 2015** from 1400 UTC until 2400 UTC. Check the web site for latest information, tools and updates.

Interested in MNQP mobile operating?

Want to be a MNQP rover / mobile?.....

We may be able to assist. Contact us at the e-mail listed for details.

MNQP
4745-170th Lane NE
Ham Lake, MN 55304



**MNQP PARTICIPANT
STREET ADDRESS
CITY, ST 12345**
